



AACR

American Association
for Cancer Research®

STRESS AND OTHER RISK
FACTORS IN AGING AND CANCER:
AN AACR INNOVATION SUMMIT

November 1-4, 2025 | Pasadena, CA

ATTENDEE LIST

PETER D. ADAMS, PHD

Director and Professor, Cancer
Genome and Epigenetics Program
Sanford Burnham Prebys Medical
Discovery Institute
La Jolla, California



ALBERTO BARDELLI, PHD

Full Professor, Department of
Oncology, University of Torino
Scientific Director, IFOM ETS,
The AIRC Institute of Molecular
Oncology
Milan, Italy



MARTINE EXTERMANN, MD, PHD

Professor of Oncology and Medicine,
University of South Florida
Chair, Senior Adult Oncology Program
Moffitt Cancer Center
Tampa, Florida



JULIO A. AGUIRRE-GHISO, PHD

Professor, Departments of
Cell Biology, Oncology
(Medical Oncology), and Medicine
(Oncology and Hematology)
Rose C. Falkenstein Chair in
Cancer Research
Director, Institute for Cancer Dormancy
and Tumor Microenvironment
Co-Leader, Montefiore Einstein Comprehensive
Cancer Center Tumor Microenvironment and
Metastasis Program
Albert Einstein College of Medicine
New York, New York



ALEXANDRA M. BINDER, SCD

Associate Professor
and Full Member,
Population Sciences in the Pacific
Program (Cancer Epidemiology)
University of Hawai'i Cancer Center
Honolulu, Hawaii



DONNA L. FARBER, PHD

George H. Humphreys, II Professor
of Surgical Sciences (in Surgery)
Chief, Division of Surgical Sciences
and Professor of Microbiology
and Immunology
Columbia University
New York, New York



KATHERINE M. AIRD, PHD

Professor and Co-Leader, Molecular
and Cellular Oncogenesis Program
The Wistar Institute
Philadelphia, Pennsylvania



KIRA BONA, MD, MPH

Associate Professor of Pediatrics
Attending Physician,
Hematology and Oncology
Boston Children's Hospital
Dana-Farber Cancer Institute
Boston, Massachusetts



LUCY A. GODLEY, MD, PHD

Jeffrey and Marianne Silver Family
Professor of Oncology
Professor, Medicine
(Hematology and Oncology)
Northwestern University Feinberg
School of Medicine
Chicago, Illinois



ANDREA ALIMONTI, MD

Director, Institute of Oncology
Research, Molecular Oncology Group
Full Professor, Department of
Health Sciences and Technology,
ETH Zurich
Full Professor,
Università della Svizzera italiana, Lugano
Institute of Oncology Research
Bellinzona, Switzerland



JUDITH E. CARROLL, PHD

Associate Professor,
Department of Psychiatry and
Biobehavioral Sciences
Cousins Center for
Psychoneuroimmunology
University of California, Los Angeles
Los Angeles, California



ANA P. GOMES, PHD

Associate Member, Department
of Molecular Oncology
Moffitt Cancer Center
Tampa, Florida



CORINA AMOR VEGAS, MD, PHD

Assistant Professor
Cancer Center Program Co-Leader
Cold Spring Harbor Laboratory
Cancer Center
Cold Spring Harbor, New York



ELIZABETH M. CESPEDES

FELICIANO, SCD, SM
Research Scientist III, Division
of Research, Kaiser Permanente
Northern California
Pleasanton, California



VERA GORBUNOVA, PHD

Professor of Biology and Medicine
Director Nathan Shock Center for
Biology of Aging
Co-director,
Rochester Aging Research Center
University of Rochester
Rochester, New York



OLGA ANCZUKÓW, PHD

Associate Professor, The Jackson
Laboratory for Genomic Medicine
Research Program Co-Leader, The
Jackson Laboratory Cancer Center
Farmington, Connecticut



ANDREW E. CHAPMAN, DO, FACP

Professor, Enterprise Vice President
of Oncology Services
Director, Sidney Kimmel
Comprehensive Cancer Center
Co-Director, Jefferson Health Senior
Adult Oncology Center
Thomas Jefferson University
Philadelphia, Pennsylvania



SHEETAL HARDIKAR, MBBS,
MPH, PHD

Assistant Professor, Department
of Population Health Sciences
The University of Utah
Salt Lake City, Utah



MICHAEL H. ANTONI, PHD

Director, Health Psychology Division,
Department of Psychology
Sylvester Professor of Psychology and
Psychiatry and Behavioral Sciences
Cooper Fellow, College of Arts
and Sciences
Cancer Control Program, Sylvester
Comprehensive Cancer Center
University of Miami
Miami, Florida



COSIMO COMMISSO, PHD

Professor, Cancer Metabolism and
Microenvironment Program
Deputy Director, NCI-Designated
Cancer Center
Sanford Burnham Prebys Medical
Discovery Institute
La Jolla, California



XUE-YAN HE, PHD

Assistant Professor of Cell
Biology and Physiology
WashU Medicine
Washington University in St. Louis
St. Louis, Missouri



IWALOLA A. AWOYINKA, PHD

Postdoctoral Researcher,
Biobehavioral Oncology
Medical College of Wisconsin
Cancer Center
Madison, Wisconsin



JAMES V. DEGREGORI, PHD

Courtenay C. and Lucy Patten Davis
Endowed Chair in Lung Cancer
Research
Professor, Department of
Biochemistry and Molecular Genetics
University of Colorado
Anschutz School of Medicine
Aurora, Colorado



CURTIS J. HENRY, PHD

Deputy Associate Director of Faculty
and Staff Relations, The University
of Colorado Cancer Center
The David F. and Margaret
Turley Grohne Endowed Chair in
Translational Cancer Research
Associate Professor, Department of Immunology
and Microbiology, University of Colorado
Anschutz School of Medicine
Aurora, Colorado



DARREN J. BAKER, PHD, MS

Professor of Biochemistry and
Molecular Biology
Professor of Pediatrics
Director, Precision Mouse
Engineering Core at Mayo Clinic
Co-Director, Paul F. Glenn Center
for Biology of Aging Research at Mayo Clinic
Mayo Clinic
Rochester, Minnesota



STANISLAV DRAPELA, PHD

Postdoctoral Researcher
Moffitt Cancer Center
Tampa, Florida



CHLOE M. HERY, PHD

Postdoctoral Researcher, Division
of Cancer Prevention and Control
The Ohio State University
Columbus, Ohio



STEFAN HINZ, PHD

Staff Scientist
City of Hope
Los Angeles, California



RON KORSTANJE, PHD

Professor
Evnin Family Chair
The Jackson Laboratory
Bar Harbor, Maine



Continued

Continued

MARK A. LABARGE, PHD
Professor, Department of
Population Sciences
Beckman Research Institute
City of Hope
Duarte, California



SHENG LI, PHD
Associate Professor,
Department of Cancer Biology
Program Co-Leader,
Epigenetic Regulation in Cancer
Norris Comprehensive Cancer Center
Keck School of Medicine,
University of Southern California
Los Angeles, California



ADANA A. M. LLANOS, PHD, MPH
Associate Professor of
Epidemiology, Mailman School
of Public Health
Co-Leader,
Cancer Population Science,
Herbert Irving Comprehensive Cancer Center
Columbia University Irving Medical Center
New York, New York



AMAIA LUJAMBIO, PHD
Scientific Director
The Mark Foundation for
Cancer Research
New York, New York



JEANNE S. MANDELBLATT, MD, MPH
Founder, Georgetown Lombardi
Institute for Cancer and Aging
Research
Professor of Oncology
Georgetown University
Washington, DC



SANDRA S. MCALLISTER, PHD
Associate Professor of Medicine,
Harvard Medical School
Associate Scientist,
Hematology Division
Brigham And Women's Hospital
Boston, Massachusetts



ALEXANDER MUIR, PHD
Assistant Professor, Ben May
Department of Cancer Research
The University of Chicago
Chicago, Illinois



PETER J. MULLEN, PHD
Assistant Professor of Immunology
and Immune Therapeutics
Assistant Professor of Gerontology
USC Norris Comprehensive Cancer
Center
Keck School of Medicine
Leonard Davis School of Gerontology
University of Southern California
Los Angeles, California



**ELECTRA D. PASKETT, PHD,
MPH, FAACR**
Marion N. Rowley Professor of
Cancer Research
Director, Division of Cancer
Prevention and Control,
Department of Internal Medicine
Distinguished Professor, College of Medicine
Professor, Division of Epidemiology,
College of Public Health
Deputy Director for Population Sciences
and Community Outreach
Founding Director,
Center for Cancer Health Equity
James Cancer Hospital
The Ohio State University
Columbus, Ohio



CAROLYN J. PRESLEY, MD, MHS
Associate Professor with Tenure,
Division of Medical Oncology,
Department of Internal Medicine
Section Chief Thoracic Medical
Oncology
Co-Director of the Cancer and Aging
Resiliency (CARE) Clinic
Associate Medical Director of the
Oncogeriatrics Program
The Ohio State University
Comprehensive Cancer Center
The Arthur G. James Cancer Hospital
and Richard J. Solove Research Institute
Columbus, Ohio



ALISON E. RINGEL, PHD
Assistant Professor of Biology
Core Member, Ragon Institute
Massachusetts Institute of
Technology
Cambridge, Massachusetts



MINA S. SEDRAK, MD, MS
Associate Professor of Medicine
Director, Cancer and Aging Program
David Geffen School of Medicine
University of California, Los Angeles
Los Angeles, California



VICTORIA L. SEEWALDT, MD
Ruth Ziegler Chair in
Population Sciences
City of Hope
Duarte, California



ERICA K. SLOAN, PHD
Professor, Monash Institute of
Pharmaceutical Sciences
Monash University
Melbourne, Victoria, Australia



SHEILA A. STEWART, PHD
Gerty Cori Professor and Vice Chair,
Department of Cell Biology and
Physiology
Professor, Department of Medicine
Associate Director for Basic Sciences
Siteman Cancer Center
Washington University in St. Louis
St. Louis, Missouri



**DAVID A. TUVESON, MD,
PHD, FAACR**
Director and Roy J. Zuckerberg
Professor of Cancer Research
Cold Spring Harbor Laboratory
Cancer Center
Cold Spring Harbor, New York



CORNELIA M. ULRICH, MS, PHD
Chief Scientific Officer and
Executive Director,
Comprehensive Cancer Center,
Huntsman Cancer Institute
Jon M. and Karen Huntsman
Presidential Professor in Cancer Research
The University of Utah
Salt Lake City, Utah



PETER VAN GALEN, PHD
Assistant Professor of Medicine
Harvard Medical School
Brigham and Women's Hospital
Boston, Massachusetts



ZHAOMING WANG, PHD
Member, St. Jude Faculty
St. Jude Children's Research Hospital
Memphis, Tennessee



ROBERT A. WINN, MD, FAACR
Director and Lipman Chair in
Oncology
VCU Massey Comprehensive
Cancer Center
Senior Associate Dean for
Cancer Innovation
Professor of Pulmonary Disease and
Critical Care Medicine
Virginia Commonwealth University
VCU Massey Comprehensive Cancer Center
Richmond, Virginia

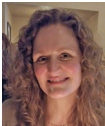


AACR

MARGARET FOTI, PHD, MD (HC)
Chief Executive Officer
American Association for Cancer
Research
Philadelphia, Pennsylvania



LESLIE BUCKINGHAM, CMP
Senior Meetings Manager
Meetings and Exhibits
Philadelphia, Pennsylvania



MICHELE M. HARTSOUGH, PHD
Senior Editor
Cancer Discovery
Philadelphia, Pennsylvania



SUZANNE LESHER
Meeting Coordinator,
Meetings and Exhibits
Philadelphia, Pennsylvania



GARIMA SINGH, PHD
Senior Scientific Program
Administrator
Research and Grants Administration
Philadelphia, Pennsylvania



MARESC STEPHANUS
Program Associate
Research and Grants Administration
Philadelphia, Pennsylvania



YIXIAN (JOHN) ZHANG, PHD
Vice President
Research and Grants Administration
Philadelphia, Pennsylvania

